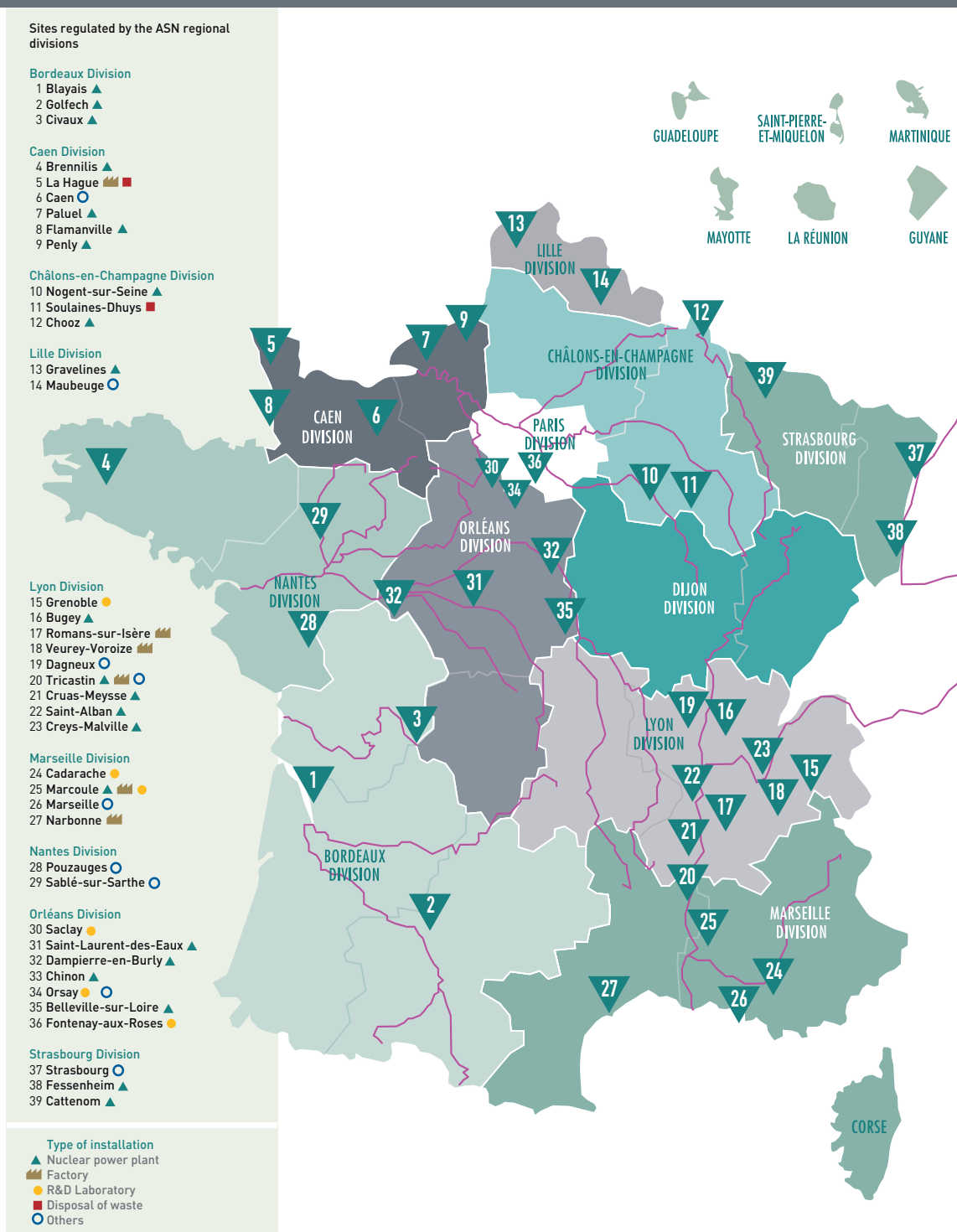


A	LIST OF BASIC NUCLEAR INSTALLATIONS AS AT 31.12.2011	471
B	ACRONYMS AND ABBREVIATIONS	483

LIST OF BASIC NUCLEAR INSTALLATIONS AS AT 31.12.2011

To regulate all civil nuclear activities and installations in France, ASN has set up a regional organisation relying on 11 divisions based in Bordeaux, Caen, Châlons-en-Champagne, Dijon, Lille, Lyon, Marseille, Nantes, Orléans, Paris and Strasbourg.

The Paris division is also responsible for activities in Martinique, Guadeloupe, French Guyana, Réunion, Mayotte and Saint-Pierre and Miquelon. The Caen and Orleans divisions are responsible for BNI regulation in the Brittany and Ile-de-France regions respectively. This organisation enables ASN to carry out its duties nation wide and in the overseas *départements*¹ and territories.



1. Administrative region headed by a *Préfet*.

LIST OF BASIC NUCLEAR INSTALLATIONS AS AT 31.12.2011

A basic nuclear installation (BNI) is one that, by its very nature or owing to the quantity or activity of the radioactive materials it contains, is subject to specific regulation arrangements as defined by the TSN Act of 13 June 2006 (now codified in books I and V of the environment code by order 2012-6 of 5 January 2012). These installations must be authorised by decree issued following a public inquiry and an ASN opinion. Their design, construction, operation and decommissioning are all regulated.

The following are considered to be BNIs:

1. Nuclear reactors;
2. Large installations for the preparation, enrichment, fabrication, treatment or storage of nuclear fuels or the treatment, storage or disposal of radioactive waste;
3. Large installations containing radioactive or fissile materials;
4. Large particle accelerators.

Except for nuclear reactors, which are all BNIs, decree 2007-830 of 11 May 2007 concerning the list of basic nuclear installations sets thresholds for each category determining the point at which they become subject to the BNI system.

For technical or legal reasons, the concept of a basic nuclear installation can cover a number of different physical situations: for example in a nuclear power plant, each reactor may be considered as a separate BNI, or a given BNI might in fact consist of two reactors. Similarly, a fuel cycle plant or a CEA centre can comprise several BNIs. These different configurations do not alter the regulation conditions in any way:

The following are subject to the BNI system:

- installations under construction, provided that they are the subject of a creation authorisation decree;
- installations in operation;
- installations shut down or undergoing decommissioning, until they are delicensed by ASN.

As at 31 December 2011, there were 125 basic nuclear installations (legal entities).

NNP name	Name and location of the installation	Licensee	Type of installation	BNI
----------	---------------------------------------	----------	----------------------	-----

LOCATION OF INSTALLATIONS REGULATED BY THE BORDEAUX DIVISION

BLAYAIS 1	BLAYAIS NUCLEAR POWER PLANT (reactors 1 and 2) 33820 Saint-Ciers-sur-Gironde	EDF	Reactors	86
BLAYAIS 1	BLAYAIS NUCLEAR POWER PLANT (reactors 3 and 4) 33820 Saint-Ciers-sur-Gironde	EDF	Reactors	110
GOLFECH 2	GOLFECH NUCLEAR POWER PLANT (reactor 1) 82400 Golfech	EDF	Reactor	135
GOLFECH 2	GOLFECH NUCLEAR POWER PLANT (reactor 2) 82400 Golfech	EDF	Reactor	142
CIVAUX 3	CIVAUX NUCLEAR POWER PLANT (reactor 1) BP 1 - 86320 Civaux	EDF	Reactor	158
CIVAUX 3	CIVAUX NUCLEAR POWER PLANT (reactor 2) BP 1 - 86320 Civaux	EDF	Reactor	159

LIST OF BASIC NUCLEAR INSTALLATIONS AS AT 31.12.2011

NPP name	Name and location of the installation	Licensee	Type of installation	BNI
BRENNILIS 4	MONTES D'ARRÉE EL4D Brennilis 29218 Huelgoat	EDF	Disposal or storage of radioactive materials	162
LA HAGUE 5	SPENT FUEL REPROCESSING PLANT (UP2) (La Hague) 50107 Cherbourg	AREVA NC	Transformation of radioactive materials	33
LA HAGUE 5	EFFLUENT AND SOLID WASTE TREATMENT STATION (STE2) AND SPENT NUCLEAR FUELS REPROCESSING FACILITY (AT1) (La Hague) 50107 Cherbourg	AREVA NC	Transformation of radioactive materials	38
LA HAGUE 5	ELAN IIB FACILITY (La Hague) 50107 Cherbourg	AREVA NC	Transformation of radioactive materials	47
LA HAGUE 5	MANCHE WASTE REPOSITORY (CSM) 50448 Beaumont-Hague	ANDRA	Disposal of radioactive waste	66
LA HAGUE 5	HAO (HIGH LEVEL OXIDE) FACILITY (La Hague) 50107 Cherbourg	AREVA NC	Transformation of radioactive materials	80
LA HAGUE 5	REPROCESSING PLANT FOR SPENT FUEL ELEMENTS FROM LIGHT WATER REACTORS "UP3 A" (La Hague) 50107 Cherbourg	AREVA NC	Transformation of radioactive materials	116
LA HAGUE 5	REPROCESSING PLANT FOR SPENT FUEL ELEMENTS FROM LIGHT WATER REACTORS "UP2 800" - (La Hague) 50107 Cherbourg	AREVA NC	Transformation of radioactive materials	117
LA HAGUE 5	LIQUID EFFLUENT AND SOLID WASTE TREATMENT STATION "STE3" - (La Hague) 50107 Cherbourg	AREVA NC	Transformation of radioactive materials	118
CAEN 6	LARGE NATIONAL HEAVY ION ACCELERATOR (GANIL) 14021 Caen Cedex	G.I.E. GANIL	Particle accelerator	113
PALUEL 7	PALUEL NUCLEAR POWER PLANT (reactor 1) 76450 Cany-Barville	EDF	Reactor	103
PALUEL 7	PALUEL NUCLEAR POWER PLANT (reactor 2) 76450 Cany-Barville	EDF	Reactor	104
PALUEL 7	PALUEL NUCLEAR POWER PLANT (reactor 3) 76450 Cany-Barville	EDF	Reactor	114
PALUEL 7	PALUEL NUCLEAR POWER PLANT (reactor 4) 76450 Cany-Barville	EDF	Reactor	115
FLAMANVILLE 8	FLAMANVILLE NUCLEAR POWER PLANT (reactor 1) 50830 Flamanville	EDF	Reactor	108
FLAMANVILLE 8	FLAMANVILLE NUCLEAR POWER PLANT (reactor 2) 50830 Flamanville	EDF	Reactor	109

LIST OF BASIC NUCLEAR INSTALLATIONS (continuation)

NPP name	Name and location of the installation	Licensee	Type of installation	BNI
----------	---------------------------------------	----------	----------------------	-----

LOCATION OF INSTALLATIONS REGULATED BY THE CAEN DIVISION (continuation)

FLAMANVILLE 8	FLAMANVILLE NUCLEAR POWER PLANT (reactor 3 - EPR) 50830 Flamanville	EDF	Reactor	167
PENLY 9	PENLY NUCLEAR POWER PLANT (reactor 1) 76370 Neuville-lès-Dieppe	EDF	Reactor	136
PENLY 9	PENLY NUCLEAR POWER PLANT (reactor 2) 76370 Neuville-lès-Dieppe	EDF	Reactor	140

LOCATION OF INSTALLATIONS REGULATED BY THE CHÂLONS-EN-CHAMPAGNE DIVISION

NOGENT-SUR-SEINE 10	NOGENT-SUR-SEINE NUCLEAR POWER PLANT (reactor 1) 10400 Nogent-sur-Seine	EDF	Reactor	129
NOGENT-SUR-SEINE 10	NOGENT-SUR-SEINE NUCLEAR POWER PLANT (reactor 2) 10400 Nogent-sur-Seine	EDF	Reactor	130
SOULAINES-DHUYS 11	AUBE WASTE REPOSITORY (CSA) Soulaines-Dhuys 10200 Bar-sur-Aube	ANDRA	Radioactive waste surface repository	149
CHOOZ 12	CHOOZ B NUCLEAR POWER PLANT (reactor 1) 08600 Givet	EDF	Reactor	139
CHOOZ 12	CHOOZ B NUCLEAR POWER PLANT (reactor 2) 08600 Givet	EDF	Reactor	144
CHOOZ 12	ARDENNES NUCLEAR POWER PLANT - CNA-D 08600 Givet	EDF	Disposal or storage of radioactive materials	163

LOCATION OF INSTALLATIONS REGULATED BY THE LILLE DIVISION

GRAVELINES 13	GRAVELINES NUCLEAR POWER PLANT (reactors 1 and 2) 59820 Gravelines	EDF	Reactors	96
GRAVELINES 13	GRAVELINES NUCLEAR POWER PLANT (reactors 3 and 4) 59820 Gravelines	EDF	Reactors	97
GRAVELINES 13	GRAVELINES NUCLEAR POWER PLANT (reactors 5 and 6) 59820 Gravelines	EDF	Reactors	122
MAUBEUGE 14	NUCLEAR MAINTENANCE FACILITY (SOMANU) 59600 Maubeuge	SOMANU	Nuclear maintenance	143

LIST OF BASIC NUCLEAR INSTALLATIONS AS AT 31.12.2011

NPP name	Name and location of the installation	Licensee	Type of installation	BNI
GRENOBLE 15	SILÔÉ 38041 Grenoble Cedex	CEA	Reactor	20
GRENOBLE 15	EFFLUENT AND SOLID WASTE TREATMENT STATION 38041 Grenoble Cedex	CEA	Transformation of radioactive materials	36
GRENOBLE 15	ACTIVE MATERIAL ANALYSIS LABORATORY (LAMA) 38041 Grenoble Cedex	CEA	Utilisation of radioactive materials	61
GRENOBLE 15	HIGH FLUX REACTOR (RHF) 38041 Grenoble Cedex	Institut Max von Laue Paul Langevin	Reactor	67
GRENOBLE 15	DECAY INTERIM STORAGE FACILITY 38041 Grenoble Cedex	CEA	Radioactive materials storage	79
BUGEY 16	BUGEY NUCLEAR POWER PLANT (reactor 1) BP 60120 - 01155 Lagnieu Cedex	EDF	Reactor	45
BUGEY 16	BUGEY NUCLEAR POWER PLANT (reactors 2 and 3) BP 60120 - 01155 Lagnieu Cedex	EDF	Reactors	78
BUGEY 16	BUGEY NUCLEAR POWER PLANT (reactors 4 and 5) BP 60120 - 01155 Lagnieu Cedex	EDF	Reactors	89
BUGEY 16	BUGEY INTER-REGIONAL WAREHOUSE BP 60120 - 01155 Lagnieu Cedex	EDF	Storage of new fuel	102
BUGEY 16	ACTIVATED WASTE PACKAGING AND STORAGE INSTALLATION (ICEDA) 01120 Saint-Vulbas	EDF	Packaging and storage of radioactive materials	173
ROMANS-SUR-ISÈRE 17	FUEL ELEMENTS FABRICATION PLANT 26104 Romans-sur-Isère	FBFC	Fabrication of radioactive materials	63
ROMANS-SUR-ISÈRE 17	NUCLEAR FUELS FABRICATION UNIT 26104 Romans-sur-Isère	FBFC	Fabrication of radioactive materials	98
VEUREY-VOROIZE 18	NUCLEAR FUELS FABRICATION PLANT 38113 Veurey-Voroize	SICN	Fabrication of radioactive materials	65
VEUREY-VOROIZE 18	PELLET FABRICATION FACILITY 38113 Veurey-Voroize	SICN	Fabrication of radioactive materials	90
DAGNEUX 19	DAGNEUX IONISATION PLANT Z.I. Les Chartinières - 01120 Dagneux	IONISOS	Utilisation of radioactive materials	68

LIST OF BASIC NUCLEAR INSTALLATIONS (continuation)

NPP name	Name and location of the installation	Licensee	Type of installation	BNI
----------	---------------------------------------	----------	----------------------	-----

LOCATION OF INSTALLATIONS REGULATED BY THE LYON DIVISION (continuation)

TRICASTIN 20	TRICASTIN NUCLEAR POWER PLANT (reactors 1 and 2) 26130 Saint-Paul-Trois-Châteaux	EDF	Reactors	87
TRICASTIN 20	TRICASTIN NUCLEAR POWER PLANT (reactors 3 and 4) 26130 Saint-Paul-Trois-Châteaux	EDF	Reactors	88
TRICASTIN 20	GEORGES BESSE PLANT FOR URANIUM ISOTOPE SEPARATION BY GASEOUS DIFFUSION (EURODIF) 26702 Pierrelatte Cedex	EURODIF PRODUCTION	Transformation of radioactive materials	93
TRICASTIN 20	URANIUM HEXAFLUORIDE PREPARATION PLANT (COMURHEX) 26130 Saint-Paul-Trois-Châteaux	COMURHEX	Transformation of radioactive materials	105
TRICASTIN 20	URANIUM CLEAN-UP AND RECOVERY FACILITY (TRICASTIN) 26130 Saint-Paul-Trois-Châteaux	SOCATRI	Factory	138
TRICASTIN 20	INSTALLATION TU 5 BP 16 - 26701 Pierrelatte	AREVA NC	Transformation of radioactive materials	155
TRICASTIN 20	TRICASTIN OPERATIONAL HOT UNIT (BCOT) BP 127 - 84504 Bollène Cedex	EDF	Nuclear maintenance	157
TRICASTIN 20	GEORGES BESSE 2 PLANT FOR CENTRIFUGAL SEPARATION OF URANIUM ISOTOPEs 26702 Pierrelatte Cedex	SET	Transformation of radioactive materials	168
CRUAS-MEYSSE 21	CRUAS-MEYSSE NUCLEAR POWER PLANT (reactors 1 and 2) 07350 Cruas	EDF	Reactors	111
CRUAS-MEYSSE 21	CRUAS-MEYSSE NUCLEAR POWER PLANT (reactors 3 and 4) 07350 Cruas	EDF	Reactors	112
SAINT-ALBAN 22	SAINT-ALBAN-SAINT-AURICE NUCLEAR POWER PLANT (reactor 1) 38550 Le Péage-de-Roussillon	EDF	Reactor	119
SAINT-ALBAN 22	SAINT-ALBAN-SAINT-AURICE NUCLEAR POWER PLANT (reactor 2) 38550 Le Péage-de-Roussillon	EDF	Reactor	120
CREYS-MALVILLE 23	SUPERPHÉNIX REACTOR 38510 Morestel	EDF	Fast-neutron reactor	91
CREYS-MALVILLE 23	FUEL EVACUATION FACILITY (Creys-Malville) 38510 Morestel	EDF	Storage of radioactive materials	141

LIST OF BASIC NUCLEAR INSTALLATIONS AS AT 31.12.2011

NPP name	Name and location of the installation	Licensee	Type of installation	BNI
CADARACHE ▼ ²⁴	TEMPORARY DISPOSAL FACILITY (PÉGASE) AND SPENT NUCLEAR FUEL DRY STORAGE INSTALLATION (CASCAD) (Cadarache) 13115 Saint-Paul-lez-Durance	CEA	Storage of radioactive materials	22
CADARACHE ▼ ²⁴	CABRI (Cadarache) 13115 Saint-Paul-lez-Durance	CEA	Reactor	24
CADARACHE ▼ ²⁴	RAPSDIE/LDAC (Cadarache) 13115 Saint-Paul-lez-Durance	CEA	Reactor	25
CADARACHE ▼ ²⁴	PLUTONIUM TECHNOLOGY FACILITY (ATPu) - (Cadarache) 13115 Saint-Paul-lez-Durance	CEA	Fabrication or transformation of radioactive materials	32
CADARACHE ▼ ²⁴	EFFLUENT AND SOLID WASTE TREATMENT STATION (Cadarache) 13115 Saint-Paul-lez-Durance	CEA	Transformation of radioactive materials	37
CADARACHE ▼ ²⁴	MASURCA (Cadarache) 13115 Saint-Paul-lez-Durance	CEA	Reactor	39
CADARACHE ▼ ²⁴	ÉOLE (Cadarache) 13115 Saint-Paul-lez-Durance	CEA	Reactor	42
CADARACHE ▼ ²⁴	ENRICHED URANIUM PROCESSING FACILITY (ATUE) (Cadarache) 13115 Saint-Paul-lez-Durance	CEA	Fabrication of radioactive materials	52
CADARACHE ▼ ²⁴	ENRICHED URANIUM AND PLUTONIUM WAREHOUSE (Cadarache) 13115 Saint-Paul-lez-Durance	CEA	Storage of radioactive materials	53
CADARACHE ▼ ²⁴	CHEMICAL PURIFICATION LABORATORY (Cadarache) 13115 Saint-Paul-lez-Durance	CEA	Transformation of radioactive materials	54
CADARACHE ▼ ²⁴	ACTIVE FUEL EXAMINATION LABORATORY (LECA) AND SPENT FUEL REPROCESSING, CLEAN-OUT AND REPACKAGING STATION (STAR) (Cadarache) 13115 Saint-Paul-lez-Durance	CEA	Utilisation of radioactive materials	55
CADARACHE ▼ ²⁴	RADIOACTIVE WASTE INTERIM STORAGE AREA (Cadarache) 13115 Saint-Paul-lez-Durance	CEA	Storage of radioactive materials	56
CADARACHE ▼ ²⁴	PHÉBUS (Cadarache) 13115 Saint-Paul-lez-Durance	CEA	Reactor	92
CADARACHE ▼ ²⁴	MINERVE (Cadarache) 13115 Saint-Paul-lez-Durance	CEA	Reactor	95
CADARACHE ▼ ²⁴	LABORATORY FOR THE EXPERIMENTAL DESIGN AND FABRICATION OF ADVANCED NUCLEAR FUELS (LEFCA) (Cadarache) 13115 Saint-Paul-lez-Durance	CEA	Fabrication of radioactive materials	123
CADARACHE ▼ ²⁴	CHICADE (Cadarache) BP 1 - 13108 Saint-Paul-lez-Durance Cedex	CEA	R&D Laboratory	156

LIST OF BASIC NUCLEAR INSTALLATIONS (continuation)

NPP name	Name and location of the installation	Licensee	Type of installation	BNI
----------	---------------------------------------	----------	----------------------	-----

LOCATION OF INSTALLATIONS REGULATED BY THE MARSEILLE DIVISION (continuation)

CADARACHE ▼ ²⁴	CEDRA (Cadarache) 13115 Saint-Paul-lez-Durance Cedex	CEA	Packaging and interim storage of radioactive materials	164
CADARACHE ▼ ²⁴	MAGENTA 13115 Saint-Paul-lez-Durance Cedex	CEA	Reception and shipment of nuclear materials	169
CADARACHE ▼ ²⁴	EFFLUENT ADVANCED MANAGEMENT AND PROCESSING FACILITY "AGATE" (Cadarache) 13115 Saint-Paul-lez-Durance Cedex	CEA	Packaging and interim storage of radioactive materials	171
CADARACHE ▼ ²⁴	JULES HOROWITZ REACTOR (RJH) (Cadarache) 13115 Saint-Paul-lez-Durance Cedex	CEA	Reactor	172
MARCOULE ▼ ²⁵	PHENIX NUCLEAR POWER PLANT (Marcoule) 30205 Bagnols-sur-Cèze	CEA	Reactor	71
MARCOULE ▼ ²⁵	ATALANTE CEN VALRHO Chusclan - 30205 Bagnols-sur-Cèze	CEA	R&D laboratory and study of actinides production	148
MARCOULE ▼ ²⁵	NUCLEAR FUELS FABRICATION PLANT (MELOX) BP 2 - 30200 Chusclan	MÉLOX SA	Fabrication of radioactive materials	151
MARCOULE ▼ ²⁵	CENTRACO Codolet - 30200 Bagnols-sur-Cèze	SOCODEI	Radioactive waste and effluent processing	160
MARCOULE ▼ ²⁵	GAMMATEC 30200 Chusclan	ISOTRON FRANCE S.A.S	Ionisation treatment of materials, products and equipment, for industrial purposes and for research and development	170
MARSEILLE ▼ ²⁶	GAMMASTER IONISATION PLANT M.I.N. 712 13323 Marseille Cedex 14	ISOTRON FRANCE	Ionisation installation	147
NARBONNE ▼ ²⁷	Ponds B1 and B2 Malvésij, 11100 Narbonne	COMURHEX	Packaging and interim storage of radioactive materials	

LOCATION OF INSTALLATIONS REGULATED BY THE NANTES DIVISION

POUZAUGES ▼ ²⁸	POUZAUGES IONISATION PLANT Z.I. de Monlifant - 85700 Pouzauges	IONISOS	Ionisation installation	146
SABLÉ-SUR-SARTHE ▼ ²⁹	SABLÉ-SUR-SARTHE IONISATION PLANT Z.I. de l'Aubrée 72300 Sablé-sur-Sarthe	IONISOS	Ionisation installation	154

LIST OF BASIC NUCLEAR INSTALLATIONS AS AT 31.12.2011

NPP name	Name and location of the installation	Licensee	Type of installation	BNI
LOCATION OF INSTALLATIONS REGULATED BY THE ORLEANS DIVISION				
SACLAY 30	ULYSSE (Saclay) 91191 Gif-sur-Yvette Cedex	CEA	Reactor	18
SACLAY 30	ARTIFICIAL RADIONUCLIDES PRODUCTION FACILITY (Saclay) 91191 Gif-sur-Yvette Cedex	CIS-bio international	Fabrication or transformation of radioactive materials	29
SACLAY 30	LIQUID EFFLUENT MANAGEMENT ZONE (Saclay) 91191 Gif-sur-Yvette Cedex	CEA	Transformation of radioactive materials	35
SACLAY 30	OSIRIS-ISIS (Saclay) 91191 Gif-sur-Yvette Cedex	CEA	Reactors	40
SACLAY 30	HIGH ACTIVITY LABORATORY (Saclay) 91191 Gif-sur-Yvette Cedex	CEA	Utilisation of radioactive materials	49
SACLAY 30	SPENT FUEL TEST LABORATORY (LECI) (Saclay) 91191 Gif-sur-Yvette Cedex	CEA	Utilisation of radioactive materials	50
SACLAY 30	SOLID RADIOACTIVE WASTE MANAGEMENT ZONE (Saclay) 91191 Gif-sur-Yvette Cedex	CEA	Disposal or storage of radioactive materials	72
SACLAY 30	POSÉIDON – CAPRI IRRADIATION FACILITIES (Saclay) 91191 Gif-sur-Yvette Cedex	CEA	Utilisation of radioactive materials	77
SACLAY 30	ORPHÉE (Saclay) 91191 Gif-sur-Yvette Cedex	CEA	Reactor	101
SAINT-LAURENT- DES-EAUX 31	SAINT-LAURENT-DES-EAUX NUCLEAR POWER PLANT (reactors A1 and A2) 41220 La Ferté-Saint-Cyr	EDF	Reactors	46
SAINT-LAURENT- DES-EAUX 31	INTERIM STORAGE OF IRRADIATED GRAPHITE SLEEVES (Saint-Laurent-des-Eaux) 41220 La Ferté-Saint-Cyr	EDF	Disposal or storage of radioactive materials	74
SAINT-LAURENT- DES-EAUX 31	SAINT-LAURENT-DES-EAUX NUCLEAR POWER PLANT (reactors B1 and B2) 41220 La Ferté-Saint-Cyr	EDF	Reactors	100
DAMPIERRE-EN- BURLY 32	DAMPIERRE-EN-BURLY NUCLEAR POWER PLANT (reactors 1 and 2) 45570 Ouzouer-sur-Loire	EDF	Reactors	84
DAMPIERRE-EN- BURLY 32	DAMPIERRE-EN-BURLY NUCLEAR POWER PLANT (reactors 3 and 4) 45570 Ouzouer-sur-Loire	EDF	Reactors	85
CHINON 33	IRRADIATED MATERIALS FACILITY (Chinon) 37420 Avoine	EDF	Utilisation of radioactive materials	94
CHINON 33	CHINON INTER-REGIONAL WAREHOUSE 37420 Avoine	EDF	Storage of new fuel	99

LIST OF BASIC NUCLEAR INSTALLATIONS (continuation)

NPP name	Name and location of the installation	Licensee	Type of installation	BNI
----------	---------------------------------------	----------	----------------------	-----

LOCATION OF INSTALLATIONS REGULATED BY THE ORLEANS DIVISION (continuation)

CHINON 33	CHINON NUCLEAR POWER PLANT (reactors B1 and B2) 37420 Avoine	EDF	Reactors	107
CHINON 33	CHINON NUCLEAR POWER PLANT (reactors B3 and B4) 37420 Avoine	EDF	Reactors	132
CHINON 33	CHINON A1D 37420 Avoine	EDF	Disposal or storage of radioactive materials	133
CHINON 33	CHINON A2D 37420 Avoine	EDF	Disposal or storage of radioactive materials	153
CHINON 33	CHINON A3D 37420 Avoine	EDF	Disposal or storage of radioactive materials	161
ORSAY 34	LABORATORY FOR THE USE OF ELECTROMAGNETIC RADIATION (LURE) 91405 Orsay Cedex	CNRS	Particle accelerator	106
BELLEVILLE-SUR-LOIRE 35	BELLEVILLE-SUR-LOIRE NUCLEAR POWER PLANT (reactor 1) 18240 Léré	EDF	Reactor	127
BELLEVILLE-SUR-LOIRE 35	BELLEVILLE-SUR-LOIRE NUCLEAR POWER PLANT (reactor 2) 18240 Léré	EDF	Reactor	128
FONTENAY-AUX-ROSES 36	PROCESS 92265 Fontenay-aux-Roses Cedex	CEA	Decommissioning research installation	165
FONTENAY-AUX-ROSES 36	SUPPORT 92265 Fontenay-aux-Roses Cedex	CEA	Installation for treatment of effluents and storage of decommissioning waste	166

LIST OF BASIC NUCLEAR INSTALLATIONS AS AT 31.12.2011

NPP name	Name and location of the installation	Licensee	Type of installation	BNI
----------	---------------------------------------	----------	----------------------	-----

LOCATION OF INSTALLATIONS REGULATED BY THE STRASBOURG DIVISION

STRASBOURG 37	STRASBOURG UNIVERSITY REACTOR 67037 Strasbourg Cedex	Université Louis Pasteur	Reactor	44
FESSENHEIM 38	FESSENHEIM NUCLEAR POWER PLANT (reactors 1 and 2) 68740 Fessenheim	EDF	Reactors	75
CATTENOM 39	CATTENOM NUCLEAR POWER PLANT (reactor 1) 57570 Cattenom	EDF	Reactor	124
CATTENOM 39	CATTENOM NUCLEAR POWER PLANT (reactor 2) 57570 Cattenom	EDF	Reactor	125
CATTENOM 39	CATTENOM NUCLEAR POWER PLANT (reactor 3) 57570 Cattenom	EDF	Reactor	126
CATTENOM 39	CATTENOM NUCLEAR POWER PLANT (reactor 4) 57570 Cattenom	EDF	Reactor	137

The declared BNIs are those which existed prior to publication of decree n° 63-1228 of 11 December 1963 concerning nuclear installations and for which said decree did not require authorisation but simply notification to the Minister in charge of Atomic Energy.

The missing BNI numbers correspond to installations that figured in previous issues of the list, but which no longer constitute BNIs further to their delicensing (see chapter 15) or their licensing as new basic nuclear installations.